



Photo Credit: Stantec Architecture Ltd./Crockwell Photography



Manuels River Natural Heritage Society Annual Report 2014-2015

A Message from the Chair of the Board of Directors

Dear Members and Sponsors,

It's been more than 25 years since a few community-minded citizens established the Manuels River Natural Heritage Society with a view to preserving and enhancing the natural wonders of Manuels River. We have seen much change and progress. Now it has been more than two years since the wonders of Manuels River and its trails have been combined with the opening of the Manuels River Hibernia Interpretation Centre, to form the Manuels River *experience*.

While I was part of the volunteer group that helped to build the Centre, I have only served on the Society's board since January 2014. I first had the privilege to serve as Vice Chair, and since January 2015 as Chair. I want to publicly thank Nancy Bennett, past Chair and Vice Chair for her guidance and support during the past two years. During my time with the Society's board the primary focus has been the start-up of the Centre and ensuring that it operates successfully and in a sustainable way.

As I look back on the past year of the Society I see great progress. Your elected board and its committees have been transitioning from a very hands-on group of volunteers to one that is more focused on oversight and governance. Many volunteer hours were required during 2013 and 2014 to ensure the successful opening and start-up of our new Centre. During 2015 we built on those efforts.

In January we welcomed five new board members and in February we held a strategic planning session which highlighted key priorities. Human resources was one key priority and we established a new organizational structure in the spring of 2015. Our management and staff at the Centre has never been better. Led by our Executive Director, Michael Mooney, we now have ten full-time and 19 part-time and casual staff.

With the proper team in place at the Centre we have been able to make progress on all fronts. Whether the measure is admissions, use of the Centre or trails, school visits, gift store sales, events bookings, special events like the Bobber Race or Giv'er on the River, website visits, Facebook likes or Twitter followers, the message is the same: steady progress and accomplishment.



Donald G. Sword
Chair of the Board of Directors
Manuel River Natural Heritage Society

A handwritten signature in dark ink, appearing to read 'Donald G. Sword', written in a cursive style.

Message from the Chair, continued

Whether it is because of a school field trip, a birthday party, the Young Scientist program, a relaxing coffee and treat at Coffee Matters inside the Centre or Lunch on the Rocks outside the Centre, a wedding ceremony or reception, a Christmas party, a news conference, a town public hearing, a Rotary Club or Chamber of Commerce meeting, or yoga lessons – Manuels River has become an essential destination for our community and a tourism destination for the area.

And the Society's financial results for our second full fiscal year of operations at our Centre has again shown an operating surplus! On the capital side we were able to complete a number of key projects including the new stream table exhibit, a new accessible trail and our beautiful new donor wall in our lobby. Plus, thanks to the fulfilled pledges from our capital campaign donors we have been able to reduce our Bank loan to less than \$400,000 and we are on track to pay off that loan in 2017, as planned.

Throughout this Annual Report you will see a number of articles and charts that illustrate the extent and growth of the Society's various operations and activities both inside and outside the Centre. We hope you are as pleased as I am with what we have been able to accomplish.

None of this success would be possible without our dedicated and engaged membership, volunteer board and committee members, staff who truly go above and beyond, loyal and generous donors and supporters including our major donor, Hibernia Management and Development Company Ltd., and key partner the Town of Conception Bay South. Not to mention the support of the general public who use our Centre and trail system daily. Thank you one and all.

We will continue to strive for growth and improvement in our operations both inside and outside the Centre. We are cautiously optimistic for 2016 but note that the economic environment including oil prices, exchange rates and government deficits means that for many, success will mean holding your own. So, in the short term, we will emphasize prudent management and provide an attractive value proposition for our members and other users.

Over the medium to long term we recognize that a successful Interpretation Centre is not the sole purpose of our Society – it merely helps us fulfill our mandate. Trails were identified as a key priority during our strategic planning session in February 2015. We want to ensure that the standards of quality within our Centre are also reflected in our park and trails. To that end, thanks to funding from the federal and provincial governments, we are developing a Master Plan for the enhancement and development of our trail system. Following an extensive planning and consultation process that included two public meetings and an online survey, we expect the board to be in a position in the Spring of 2016 to approve the comprehensive Trails Master Plan that will take the Manuels River *experience* to the next level.

I hope you enjoy this annual report that highlights our successful fiscal year, 2014-15. We look forward to continued progress and growth.

- Don Sword

Executive Director's Report



Michael Mooney
Executive Director

A handwritten signature in black ink, which appears to read "Michael Mooney".

This past year was a great year at the Manuels River Hibernia Interpretation Centre. We have expanded our program offerings and hired additional staff. These important achievements reflect increased activity here as well as our continued growth. We also hosted an increasing number of visitors – from Conception Bay South, the Northeast Avalon, across the country, and around the world.

As you will see in this Annual Report, the number of education and interpretation offerings were up over 52 percent from the previous year, while events and venue rentals increased by more than 90 percent. A focus for the year was to better include all age groups and as such we launched Babies@Manuels, Teen Nights, and Dinner and a Movie. More adult programming has been developed and these new programs will be launched shortly.

Our exhibit space has been greatly enhanced by our new stream table – a fun, educational river model which allows visitors to see and participate in geological processes. With the addition of dedicated staff in the Gift Store and Visitor Information Centre, our front desk services have been improved for our visitors. We have a strong relationship with Coffee Matters, and have worked collaboratively with them in developing new programs. We now have a dedicated supervisor for our trails and have already received positive feedback on their improved conditions. In line with the fundamental tenet of accessibility at the Centre and on our trails, we constructed a fully accessible segment close to the centre which completes a loop as it meets the T'Railway. With our Trails Master Plan set to be completed in early 2016, we are now in a position to move our trail system to the next level over the next five to ten years with upgrading and expansion.

The tremendous growth seen last year would not have been possible without our passionate, engaged, friendly staff. We have established a great team here at the Centre whose work is supported and strengthened by an equally dedicated and knowledgeable group of volunteers who serve on our Board of Directors and its committees. Partners, sponsors, donors, and funding agencies have been instrumental in our growth and success this past year as well. The Town of Conception Bay South has been incredibly supportive of many of our new initiatives and their staff have been generous with their time and expertise.

All of the above point to the improvement of The Manuels River *experience* and form a great foundation on which to move forward in offering new educational and social experiences. As we look ahead to 2016, we are excited about our continued expansion and the increasing number of both residents and tourists who love our Centre, our programs, and our trails.

Table of Contents

A Message from the Chair of the Board of Directors.....	1
Executive Director's Report.....	3
Table of Contents.....	4
Manuels River Natural Heritage Society.....	5
Year in Review.....	6
Education and Interpretation.....	7
Theatre.....	9
Exhibits.....	9
Trails.....	10
Gift Store and Visitor Information Centre.....	11
A Gathering Space.....	12
Fundraising @Manuels River.....	12
Memberships.....	13
Donor Opportunities.....	13
Program and Development Partnerships.....	14
Where to Find Out More About Us.....	15
Treasurer's Report.....	16
Offerings @Manuels River.....	17
Thank-you!.....	19
Our Staff.....	21
Committees of the Board.....	22
Independent Auditors Report.....	23



Manuels River Natural Heritage Society

Est. in 1989

A group of concerned citizens formed the Manuels River Natural Heritage Society (MRNHS) in 1989 with the mandate to protect, conserve, enhance and foster an appreciation of the River.

The MRHNS began its operations by cleaning up the River and developing a park and wilderness trail system. The Society has implemented a number of interpretive programs over the years devoted to education, recreation and conservation, including guided geology and wildflower tours, programs for schools and summer visitors, campfires, sing-a-longs, exhibitions and more.

In 2013, with the help of generous donors, MRNHS opened the doors of the Manuels River Hibernia Interpretation Centre and took the Manuels River *experience* to a whole new level.

In 2014-2015

- New Articles and By-laws were adopted at the AGM in January.
- A strategic planning session was held in February which identified a number of priority initiatives including human resources, trails and a fundraising strategy to help ensure sustainable operations.
- We welcomed five new directors to the table which allowed us to broaden the variety of expertise held by the Board of Directors.

Board of Directors 2015

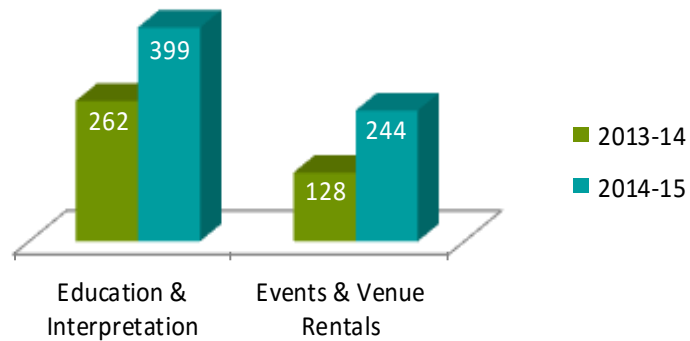
Donald G. Sword	Chair
Nancy Bennett**	Vice-Chair, Marketing Chair
Doug Russell	Treasurer, Finance Chair
Sandra Baggs	Secretary
Andrea Gosse	Director, Special Events Chair
Chris Lake*	Director
Cynthia Brown**	Director
Dave Works	Director
Dawn Dalley*	Director
Elizabeth Young**	Director
Gail Butler*	Director
Jan Spracklin**	Director, Trails Chair
Jane Murphy*	Director
Jennifer Lake	Ex-officio, Town of CBS
Mike Siscoe	Director, Operations Chair
Natacha Fudem*	Director
Pat Sword**	Director, VEGS Chair

* Joined in 2015

** 10 or more years of service

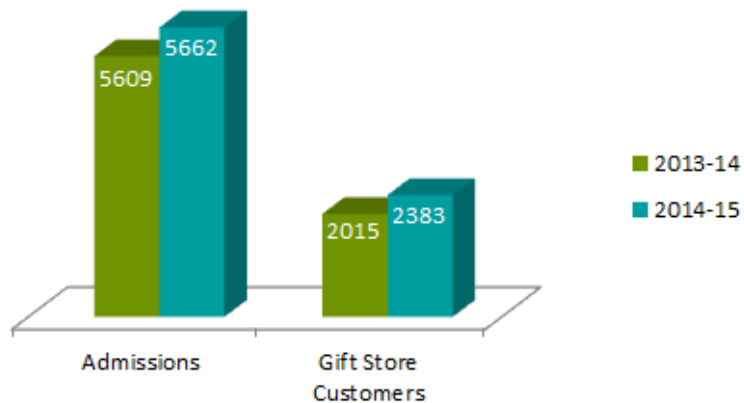
Our Year in Review

Number of Offerings



Activity at the Manuels River Hibernia Interpretation Centre (MRHIC) was up across the board in 2014-15 compared to the previous year, with most areas of the operation up significantly.

- Education and Interpretation activities up 52.3%
- Events and Venue Rentals up by 90.6%
- Exhibit Admissions increased marginally
- Number of Gift Store customers up 18.3%



Trail Usage Up in 2014-2015

Our trail counts hit over 26,000 from August to October!

Education and Interpretation

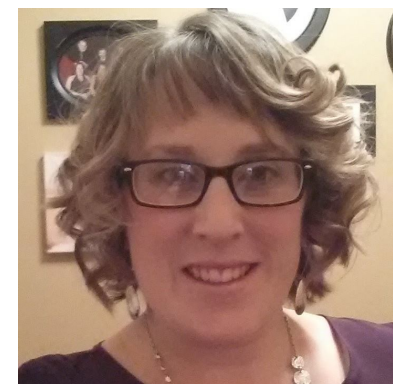
The Education and Interpretation Department at Manuels River is a busy one. With 22 different programs, we are always planning a new adventure for our visitors. From hikes, to exploding science, and trilobites to animal adaptations, there is always something new to learn!

↑
52%

- 41 School Visits with 1669 students
- 69 Young Scientist sessions with 595 participants
- 106 Birthday Parties with 1762 participants
- 16 Guides and Scouts Sleepovers
- 9 weeks of Science Camp at 78% capacity
- 18 Visiting Camps with 719 participants
- and dozens of other events throughout the year!



Eleanor Power and Dr. Rod Taylor
Lead Interpreters



Shannon Harding
Education Manager

Education and Interpretation

Curriculum Based School Programming

We now have nine curriculum based River Adventures to offer to students for grades 3 through 8 and high school. The development and delivery of this programming are fully funded by a grant from the Hibernia Management and Development Company Ltd. We are now looking at post-secondary opportunities as well as programming for the winter season.



Science Camps

In 2014-15, we offered Summer Science camps, sponsored by Nalcor Energy, to children ages 6 to 11 with great success. The feedback from parents and campers was exceptional and we are looking forward to launching our new camp season with registration beginning in February for the Spring Science Camp and May for the Summer Science Camp.



Young Scientist Program

In 2014-15, we were able to expand the delivery of our Young Scientist program with the assistance of funding from United Way. Young Scientist is an introductory science program geared towards children from 3 to 8 years old and offered bi-weekly on Friday, Saturday and Sunday. Each week offers a new theme and a new experience!



Next Year we plan to...

Expand Teen Night Program to engage youth in STEM (Science, Tech., Engineering, Math)

Launch Adult Programming in the form of social afternoons and evenings

Grow Young Scientist to include programming for ages 0 to 12

Theatre and Exhibit Spaces

The Manuels River Theatre, made possible by a generous donation from Vale, is equipped with 52 seats and a state of the art 7:1 sound system with LED lighting and is also available to rent for private events.

Unlimited movies on the day of your Centre admission are *included* with your admission and are always free for members!

Theatre uses include:

- ⇒ Facility Rentals
- ⇒ Science Camps
- ⇒ Babies @Manuels
- ⇒ Dinner & a Movie Program
- ⇒ Theme Weeks



Dr. Riccardo Levi-Setti's Trilobite Collection

Our trilobite fossils were generously donated by Dr. Riccardo Levi-Setti who excavated the shale beds along Manuels River prior to 1980 and discovered many magnificent trilobite fossils.

His collection was catalogued and new fossil storage cabinets were acquired in the Fall of 2015.



Stream Table Exhibit

In May of 2015 The EmRiver3 Stream Table arrived and was installed at Manuels River. It has become a well loved stop for visitors to the Centre. [Look for information on the completion and formal launch of this great new interactive exhibit in March of 2016.](#)



Trails

The extensive Manuels River trail system is an integral part of the Manuels River experience. The trails provide access to the many wonders of the river valley for educational and interpretative programming. They also provide for outdoor team building components for corporate rentals and are used daily by local residents for recreational purposes.

- Property ownership study completed and comprehensive easement property rights confirmed with provincial government, Crown Lands and the Dept. of Transportation and Works.
- New accessible trail near the Centre with three access points to the river completed – fulfilling the original Centre plan. Grand Opening to be held in the Spring.
- Funding for Trails Master Plan received from federal and provincial governments.
- Tract Consulting contracted to develop Trails Master Plan – due Spring 2016. Extensive consultations held during 2015 including a public open house and online survey.



2 New Trail Sections Opened

Gallagher Walk - November 2014

Loop with T'Railway - October 2015



Stuart Crosbie
Facilities & Trails Coordinator

Gift Store, Visitor Information Centre and Café

The Gift Store carries a broad variety of products for every interest:

- Developing and enriching young minds through science and geology
- Finding a gift for a special occasion
- Pampering yourself with top rated skin care
- Picking the perfect souvenirs
- Indulging in beautiful and unique jewelry

We have a focus on locally produced and manufactured items from Newfoundland and Labrador.

We aim to keep our prices affordable to ensure everyone can enjoy a pleasant shopping experience regardless of budget.

“Beautiful trails, incredible fossils and wonderful tour guides.”

— Visitors from Pennsylvania

“Awesome! Fossils are cool. I love rocks, rocks are cooler than I thought.”

— Kids from St. John's



Alicia Legge
Gift Store & Admissions Manager

“There is also a beautiful gift shop with reasonably priced items (a hard find in some tourist spots these days).”

— Trip Advisor review



The Manuels River Hibernia Interpretation Centre operates the NL Visitor Information Centre within Conception Bay South through a partnership with the provincial government. In addition to brochures, maps and web access, our friendly front desk staff are happy to help visitors find their way!

We have welcomed visitors from across Canada and around the world, including, Germany, USA, Ireland, Scotland, Australia, England, China and Chile.



Coffee Matters café is a favourite year-round attraction at the Centre featuring great locally-roasted coffee and fresh homemade food. Summer time brings the enjoyment of Coffee Matters outside with its popular "Lunch on the Rocks" picnics.

A Gathering Space

41 Wedding Events
held at MRHIC in
2014-15.

Corporate Events
held at MRHIC in
2014-15. **53**

141 Community Events
held at MRHIC in
2014-15.



Special Events @Manuels River

Each year, the Manuels River Natural Heritage Society hosts special events aimed at fundraising and providing events that the entire community can enjoy.

Watch Your Bobber Race Day

July 4, 2015: 25th Annual Bobber Race, 2nd Annual Children's Carnival and 1st Annual Corporate Bobber Race.

[Mark your calendar for July 2, 2016.](#)

3rd Annual "Giv'er on the River" Fun Run

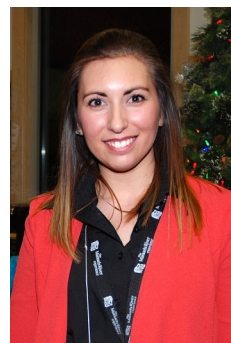
was held on October, 25, 2015 with over 300 participants.

[Mark your calendar for October 23, 2016.](#)

Annual Gala was rescheduled this year.

[Mark your calendar for April 9, 2016.](#)

2nd Annual **New Year's Eve** dinner and dance at Manuels River was sold out!



Sarah Au
Events Manager



Lindsay Mills
Events Lead

Membership and Donor Opportunities

334 Members

Become a Member

Family \$70

Single \$40

Senior/Student \$35

Lifetime \$500



In 2015:

6 plaques were placed on theatre seats.

2 benches were installed.

15 engraved bricks were laid.

Donations may be recognized by:

- Outdoor bench: \$1500
- Engraved theatre seat plaque: \$500
- Corporate paver brick: \$500
- Individual paver brick: \$250

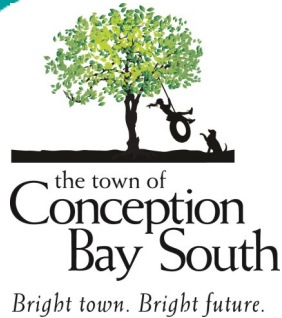
Benefits Include: One year of unlimited admission, e-newsletter, invitation to exclusive events, as well as 10% discount on camps, birthday parties, rentals, and purchases in the gift store. Also free admission to science centres across Canada through the reciprocal agreement with CASC, and more.



Jillian Ennis
Executive Assistant



Program and Development Partnerships



Town of Conception Bay South

Operating a key piece of tourism and community infrastructure in the town, the Manuels River Natural Heritage Society enjoys a tremendous working relationship with Council and staff. We work closely with the Town's Economic Development and Tourism staff and receive tremendous support from other departments.

Heidelberg University - Institut für Geowissenschaften (Institute of Earth Sciences)

The Heidelberg University research team continued their summer visits to the river this past year. The lead researchers conducted field work in preparation for finalizing their doctoral theses and were joined by the project professor and eleven masters students for the annual field trip. The Klaus Tschira Foundation has renewed research funding for an additional three years.



UNIVERSITÄT
HEIDELBERG
ZUKUNFT
SEIT 1386



Eastern NL Geological Network

Seven partners from the eastern region of Newfoundland have been working together this year to share best practices, learn from each other, and to raise the level of geological interpretation at our sites and tie our locations together in the minds of visitors, encouraging them to visit.



Oceans Learning
Partnership

New Tourism Package!

“Ride the Ocean Waves and Picnic with Fossils”

is now live on the provincial tourism website and our website and includes a morning zodiac tour with snorkelling or kayaking options, ‘Lunch on the Rocks’, and afternoon fossil activities here on the river with our paleontologist Dr. Rod Taylor.

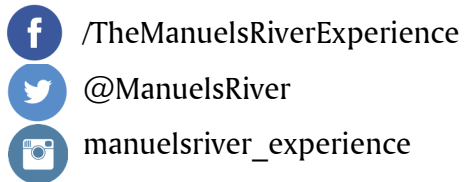


Laura King
Science Outreach Manager

Where to Find Out More About Us

Where to find information on all of our great events!

- Our monthly “River Talk” column in our community newspaper *The Shoreline News*
- Town of Conception Bay South’s e-newsletter *The Scoop*
- Our e-newsletter
- Our website (see below)
- Social media



In 2015, you may have seen us at ...

- NL Kids Expo
- NL Kids Toy and Gift Shoppe
- Food & Savor Show
- The Ultimate Bridal Show
- Earth Day Fair @ the Fluvarium
- Avalon Mall Science Fair
- World Oceans Day Celebration
... and more!

Meet our new mascot, Doxi!



The name **Doxi** is short for the famous trilobite fossil found on Manuels River - *Paradoxides*.

www.manuelsriver.com

Treasurer's Report

On behalf of the Board of Directors of the Manuels River Natural Heritage Society Inc., I am pleased to present you with the 2014-15 Audited Financial Statements, which accompany this Annual Report.

The 2014-15 fiscal year results show significant growth in our source revenues, such as admissions, gift store, beverage and catering revenues and facility rentals, along with the continued support from our partners including the Town of Conception Bay South, Hibernia Management Development Corporation Ltd., Nalcor, the provincial and federal governments, as well as our many capital pledges and donations from private and corporate supporters.

The past fiscal year also resulted in significant strides in the development of the Society with respect to the implementation of the human resource policies and development plan, trail development, significant reduction in the outstanding balance of our capital loan on the building, continued growth and development of our education programs and greater utilization of our facility for weddings and other events.

The results of the past fiscal year show a small net income surplus of \$14,410, which is particularly significant, given the decision to defer our major fundraising event, the Gala to April 2016.

Our success could not have occurred without the dedicated efforts of our staff, volunteers, Board of Directors, Committee Members and private and corporate supporters.

I am also pleased to advise that the CRA Charities Directorate has approved our application to change our fiscal reporting period to a December 31 year end, which should align our operation more favourably to conduct our business plan for the future.

I look forward to continued success of the Manuels River Natural Heritage Society for the coming fiscal year and beyond.

I would like to thank our stakeholders for their continued confidence and support for our organization and our ability to deliver results. I believe our Society is well positioned to continue to deliver the disciplined and sustainable growth required to meet our long term objectives.



John Berniquez
Accountant &
Financial Advisor



Doug Russell
Treasurer

A handwritten signature in blue ink, appearing to read 'Doug Russell'.

Offerings @Manuels River

Program or Service	Summary
Afternoons @Manuels River	Afternoon social/science events for adults 19+. Held once per month, tickets to be purchased in advance. Includes coffee, tea and light refreshment.
Audio Tour	Visitors have the option of renting an audio device from the gift store that coincides with markers on the trail and will give them the geological, biological and historical information about Manuels River.
Babies @Manuels	Held two Mondays a month at 11 am. This is a movie and social time. Included with admission.
Birthday Parties	2 hour events that include one hour of programming, loot bags and use of discovery room, 5 available themes. Charged per child. Offered on Saturdays and Sundays.
Campfires	Evening public programming offered on Thursday evenings from June through August. Interactive, usually include marshmallow roast and sing along on the rocks.
Community Events	These are events held by the education department and include Family Fun Days, Geocaching Days, Seasonal events such as the Easter Hunt, and other programming that is not necessarily science or geology based.
Community Event Rentals	Community groups and organizations are able to rent spaces at MRHIC for their meetings, programs etc...
Corporate Event Rentals	Businesses are able to rent spaces at MRHIC for their meetings, workshops, conferences, socials etc...
Day Camp Visits	Programming offered specifically in the summer months to day camps that would like to visit Manuels River. Often includes games and hikes.
Dinner and a Movie	A ticketed event that occurs twice per month with a different feature each time. Includes dinner with Coffee Matters.
Exhibit Tours	Guided tours of the exhibit space with an interpreter. Available at any time.
Geocaching	Manuels River is home to a number of geocaches. Brochures are available with lists of coordinates and workshops are available to learn how to use a GPS and geocache. GPS Units are also available for rental in the Gift Store.
Gift Store	A welcoming and friendly retail space which aims to enhance the visitor's experience by providing merchandise such as local art, nature books, science kits, locally made bath and body products and so much more.
Guides and Scout Programs	Evening programming that is offered primarily during the week. Normally up to 2 hours. Often has a theme to help children achieve badges. Can includes arts/crafts, experiments, hikes, games etc...
Science/Geology Programming	This is programming led by the education department that is of a geological or scientific nature. Includes, Fossil Friday, Outrageous Science, demonstrations etc...
Lunch and a Movie	A ticketed event that occurs once per month with a different feature each time. Includes lunch with Coffee Matters.
Manuels River After Hours	Evening social/science events for adults 19+. Held once per month, tickets to be purchased in advance. Includes cash bar and light refreshment.

Offerings @Manuels River

Program or Service	Summary
Private Program Bookings	Groups are able to book private programs such as hikes, tours, geocaching, and science programs.
Private Event Rentals	We rent space for private functions including milestone birthday parties, anniversary celebrations, bridal and baby showers.
Professional Development Workshops	These workshops are geared towards other educators or groups who work with children and are focused on incorporating science into program delivery. They are available to schools, daycares, recreation groups and any other interested groups.
River Tours	Throughout the Spring and Summer, guided hikes on the river system are offered and included with admission to the Centre. These hikes can be booked during the Winter and Fall months as well.
School Programming	Curriculum linked education programs are available to both schools and homeschool groups.
Science Camps	Camps are offered to ages 6 through 11 during the Spring/Easter break as well as during the Summer months. They are focused on science, nature and of course, fun!
Sleepover Programs	Fully programmed and themed science sleepovers that can include a movie in the theatre before lights out, a campfire and continental breakfast in the morning.
Special Events	Fundraising events that are held for MRNHS throughout the year including the Bobber Race, Giv'er on the River and the annual Gala event.
Teen Night	An evening of science geared specifically towards teens where they are presented with a challenge. This is a ticketed event and snacks are included.
Theatre Showings	The state of the art theatre shows up to three full length features per day. These are included with admission.
Tourism Packages	These are full excursions and experiences. They include dedicated expertise and an augmented experience. They may be partnered with another organization and may include a meal.
Trivia Night	A new monthly program, offering a fun night out for adults 19+ to test teams of 6 on their knowledge on science, sports, pop culture and many other subjects.
Visitor Information Centre	The Manuels River Hibernia Interpretation Centre is the official Visitor Information Centre within the Town of Conception Bay South.
Wedding Ceremony and Receptions	We offer a unique, picturesque venue for couples to tie the knot and celebrate their new life together among their family and friends.
Young Scientist Program	This program aims to introduce STEM concepts to children from ages 3 to 8. It is, however, open to all children and is held with a different theme twice per month.

Thank-You to our Donors!



2015 saw the unveiling of the Donor Wall in our front lobby, honouring and thanking all of our capital donors in the construction of the Manuela River Hibernia Interpretation Centre.

Our donors were welcomed at an unveiling ceremony held on November 19, 2015.

Capital Donors

Major Donor

Hibernia Management and Development Company Ltd.

Government Partners

Government of Canada
Government of Newfoundland and Labrador
Town of Conception Bay South

Partners

Nalcor Energy
The Morgan Family Group of Companies
Rotary Club of Avalon Northeast
The Schibler Family (Tim Hortons)
Vale

Leaders

Barbara C. FitzGerald
City Honda
Donald & Pat Sword
Gerda & Klaus Tschira
Household Movers and Shippers Limited
Newfoundland and Labrador Credit Union
The Patten Family Foundation
Pennecon Limited
Platinum Construction Company Limited
Riccardo & Nika Levi-Setti *(In Kind)*
Robert R. Regular Law Office
Terra Nova Motors Ltd.
Toyota Plaza Scion
Villa Nova Pharmacy

Friends

CBS Lions Club
Cooper Lighting *(In Kind)*
Crosbie Job Insurance
Cynthia & Derek Brown
David Works
Elinor Gill Ratcliffe
Greg & Regina O'Keefe
J. Thomas Ryan *(In Memoriam)*
Jeremy Hall
Johnson Inc.
NL Construction Association - Rick Spracklin
Noel Andrews & Janice Chaytor-Andrews
Parsons & Sons Transportation Ltd.
RBC Foundation

Rideout Tool & Machine Inc.
Ruth Slaunwhite *(In Memoriam)*
Science and Reason in Society
The Shoreline News *(In Kind)*
Trident Construction Ltd. *(In Kind)*
Vatchers Auto Parts
Vigilant Technical Sales Ltd. *(In Kind)*
Vivid Communications *(In Kind)*

Thank-You to Our Donors!

Donations & Grants

Joanne Middleton	Dept. of Business Tourism	Conservation Corps NL
Donald & Pat Sword	Culture and Rural Development	Young Canada Works
Gerda Tschira	Atlantic Canada Opportunities Agency	United Way
Bursey Manufacturing	Dept. of Advanced Education and Skills	Community Sector Council
Ellen Caplan		Women in Science and Engineering NL

Bobber Race

Shoppers Drug Mart	Stop and Save	Coffee Matters
Irving (Manuels)	Dough By's Bakery	Redwood Construction
Marie's Mini Mart (Manuels)	North Atlantic Orange Store (Manuels)	CBS Taxi
Dominion (Manuels)	Paradise Bakery	Newfoundland Structures Inc.
		Sobeys (Long Pond)

Giv'er on the River

Nalcor
Canadian Cancer Society NL
Dicks & Company
The Paperie
Town of Conception Bay South
TD Bank
Crosbie Engineering Ltd.
Platinum Construction Ltd.
Frontier Subsea Inc.
MAE Design Ltd.
Dr. Adrian Power

Corporate Bobber Race Participants

Brian's Auto Body	Eastern Valve & Control Specialties	NL Hydro - Holyrood Generation Station	RS Rogers
British Group of Companies	Johnson Insurance	NL Power	S & L Porter Homes
Cal LeGrow Insurance	Kelly's Custom Home Entertainment Ltd.	Noel R. Andrews & Associates Inc.	Scotiabank - Long Pond
CBS Dental	Knightsbridge	Ocean Quest Adventures	Sisters in Fitness
CBS Rentals	Robertson Surette	Penney Group of Companies	Studio 5
CBS Taxi	m5 Marketing	Pinnacle Networks	Superior Woodworking
Ches Crosbie Barristers	Communications	Pinnacle Office Interiors Ltd.	Terra Nova Motors
Coastal Connections Ltd.	MAE Design Ltd.	Pirate Cabs	The Telegram
Coffee Matters	McDonalds - CBS	Platinum Construction	Tim Hortons - Manuels
Cohen's	McInnes Cooper	RBC - CBS	Trident Construction
Cox & Palmer	Michael's Jewellery	Remax/Infinity Realty	Triware Technologies
Deloitte	National PR	Renu Industries Canada	Villa Nova Pharmacy
Eastern Demolition		Robert R. Regular Law Office	Villa Nova Plaza
			Woodstock Colonial Restaurant

Our Staff

We couldn't do what we do, and be who we are without the amazing team of dedicated staff that we have at Manuels River. Thank-you to all of those who have worked with us over the past year, some in more than one department!

Operations

Alicia Legge
Dylan Petten
Jillian Ennis
John Berniquez
Laura King
Michael Mooney
Stuart Crosbie

Internships

Casey Crane
Emily Slade
Myfanwy Price
Samantha Rideout

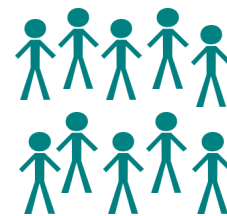
Interpretation

Anna Broaders
Ashley Parsons
Eleanor Power
Emily Gorner
Kyle Barbour
Laura Cadigan
Nathaniel Noel
Rachel Smith
Rod Taylor
Ryan Peach
Samantha Pomroy
Sarah Manning
Shannon Harding
Shannon Smith
Sydney Boychuk
Sydney Green
Véronica Sullivan

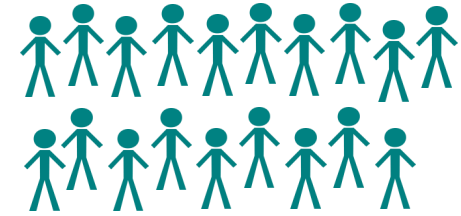
Events

Ashley Eason
Chris MacEachren
Christina Peddle
Daniel Rees
Emily Lockyer
Jacqueline Butler
Jessica Rideout
Justin Smith
Lindsay Mills
Melissa Scott
Michelle Scott
Sarah Au
Tiffany Randell

In 2015, the Society was one of 45 non-profit organizations to take part in a pilot study conducted by the Community Sector Council of NL and MUN's Collaborative Applied Research in Economics (CARE). The study found that for every two full-time positions in the community sector, an additional 1.2 full-time positions are created by their spending. For Manuels River, this translates into an additional six full-time and 12 part-time jobs in the community! This is in addition to 10 full-time and 19 part-time positions at the Manuels River Hibernia Interpretation Centre in 2014-15.



10 Full-Time Staff



19 Part-Time Staff

Committees of the Board

The Board of the Manuels River Natural Heritage Society is made up of volunteers (see page 5).

In addition to those volunteers there is a team of committee members who lend their expertise to our organization.

They all deserve a big Thank-you for their time and dedication.

Andrea Gosse	Doug Russell	Leanne Scoville	Rick Spracklin
Andy Hennebury	Elizabeth Young	Liz Davis	Ron Smith
Beth Johnstone	Fallon Piercey	Michelle Hawco	Ryan Lawlor
Catherine Senior	Gail Butler	Mike Siscoe	Sandra Baggs
Chris Lake	Gord Farrell	Minette Rose	Sharon Deemer
Christina Samson	Jan Spracklin	Nancy Bennett	Shelley Moores
Cyndi Corbett-Dawe	Janna Cleary	Natacha Fudem	Stephanie Norman
Cynthia Brown	Jennifer Lake	Paige Austin	Steve Keats
Dan Ficken	Jeremy Hall	Pamela Clarke	
Dave Works	John Smith	Pamela Sheppard	
Derek Brown	Kristen Schibler	Pat Sword	
Don Sword	Krista Perry	Pat Wells	

Independent Auditors Report

Manuels River Natural Heritage Society Inc.

Contents

Independent Auditor's Report	1-2
Statement of Financial Position	3
Statement of Operations and Net Assets	4
Statement of Cash Flows	5
Notes to the Financial Statements	6-8
Schedule of Income	9

INDEPENDENT AUDITOR'S REPORT

To: The Board of Directors of the Manuels River Natural Heritage Society Inc.

I have audited the accompanying financial statements of the Manuels River Natural Heritage Society Inc. which comprise of the statement of financial position as at October 31, 2015 and the statements of operations and net assets and cash flows for the year then ended, and a summary of significant accounting policies and other explanatory information.

Management's responsibility for the Financial Statements

Management is responsible for the preparation and fair presentation of these financial statements in accordance with Canadian accounting standards for not-for-profit organizations and for such internal control as management determines is necessary to enable the preparation of financial statements that are free from material misstatement, whether due to fraud or error.

Auditor's Responsibility

My responsibility is to express an opinion on these financial statements based on my audit. Except as explained in the following paragraph, I conducted my audit in accordance with Canadian generally accepted auditing standards. Those standards require that I comply with ethical requirements and plan and perform the audit to obtain reasonable assurance about whether the financial statements are free of material misstatement.

The organization derives revenue from the general public and fund-raising activities, the completeness of which is not susceptible to complete audit verification. Accordingly, my verification of this revenue was limited to accounting for the amounts recorded in the records of the organization and I was not able to determine whether any adjustments might be necessary to income, excess of expenses over income, assets and net assets.

An audit involves performing procedures to obtain audit evidence about the amounts and disclosures in the financial statements. The procedures selected depend on the auditor's judgement, including the assessment of risks of material misstatement of the financial statements, whether due to fraud or error. In making those risk assessments, the auditor considers internal control relevant to the entity's preparation and fair presentation of the financial statements in order to design audit procedures that are appropriate in the circumstances, but not for the purpose of expressing an opinion on the effectiveness of the entity's internal control. An audit also includes evaluating the appropriateness of accounting policies used and the reasonableness of accounting estimates made by management, as well as evaluating the overall presentation of the financial statements.

Independent Auditors Report

Independent Auditors Report

Opinion

In my opinion, except for the effects of adjustments, if any, which I might have determined to be necessary had I been able to satisfy myself concerning the completeness of the revenue referred to in the preceding paragraph, these financial statements presents fairly, in all material respects, the financial position of the organization as at October 31, 2015 and its financial performance and cash flows for the year then ended in accordance with Canadian accounting standards for not-for-profit organizations.

Paradise, Newfoundland
January 19, 2016



William P. Collins
Chartered Professional Accountant

Manuels River Natural Heritage Society Inc.

STATEMENT OF FINANCIAL POSITION

October 31, 2015

Page 3

ASSETS

Current assets		
Bank accounts (note 3)	\$ 887,477	\$ 969,011
Accounts receivable	35,522	10,373
Taxes receivable	12,923	140,253
Inventory	27,217	27,644
Prepaid expenses	2,128	700
	<u>965,267</u>	<u>1,147,981</u>

Property and equipment (notes 2 & 4)

6,079,653 6,106,754

Total assets

\$ 7,044,920 \$ 7,254,735

LIABILITIES AND NET ASSETS

Current liabilities

Accounts payable and accrued liabilities	\$ 44,439	\$ 21,190
Deferred revenue	283,727	490,093
Current portion of long term debt	17,497	23,339
	<u>345,663</u>	<u>534,622</u>

Long term

Loan payable Royal Bank of Canada (note 5)	378,181	570,854
Deferred contributions related to property & equipment (note 6)	6,168,479	6,011,072
	<u>6,546,660</u>	<u>6,581,926</u>

Total liabilities

6,892,323 7,116,548

Net assets

Unrestricted net assets	152,597	138,187
-------------------------	---------	---------

Total liabilities and net assets

\$ 7,044,920 \$ 7,254,735

Approved by:

_____ Director

The accompanying notes are an integral part of these financial statements

Independent Auditors Report

Independent Auditors Report

Manuels River Natural Heritage Society Inc.

Page 4

STATEMENT OF OPERATIONS AND NET ASSETS

For the year ended October 31, 2015

	2015	2014
Income (Schedule)		
Grants	\$ 276,928	\$ 262,500
Donations	10,097	2,593
Memberships	5,058	1,996
Other income	453,017	400,399
Amortization of deferred contributions	162,643	162,271
	<u>907,743</u>	<u>829,759</u>
Expenses		
Advertising and promotions	8,155	9,902
Amortization	166,942	166,776
Bad debts	-	948
Bar supplies	53,155	40,711
Business fees, taxes and licences	1,256	1,214
Education supplies	25,722	13,259
Fundraising costs	21,271	26,153
Fundraising costs - Professional fees	9,570	16,753
Gift shop supplies	28,013	21,370
Insurance	876	2,048
Interest and bank charges	7,207	6,631
Interest on long term debt	16,992	26,434
Meeting expenses	1,911	-
Miscellaneous	319	2,808
Office and administration supplies	9,098	14,267
Professional fees	7,014	5,718
Repairs and maintenance	24,356	37,179
Salaries and employee benefits	480,331	386,265
Trails maintenance	21,606	6,879
Training	3,512	2,920
Travel	5,798	7,229
Utilities	229	222
	<u>893,333</u>	<u>795,686</u>
Excess of income over expenses	14,410	34,073
Unrestricted net assets, beginning of the year	138,187	104,114
Unrestricted net assets, end of the year	\$ 152,597	\$ 138,187

The accompanying notes are an integral part of these financial statements

Independent Auditors Report

Manuels River Natural Heritage Society Inc.

Page 5

STATEMENT OF CASH FLOW For the year ended October 31, 2015

	2015	2014
Cash flows from operating activities		
Excess of revenue over expenditures	\$14,410	\$34,073
Items not requiring an outlay of cash:		
Amortization of property and equipment	166,942	166,776
	<u>181,352</u>	<u>200,849</u>
Net changes in working capital balances		
Accounts receivable	(25,149)	(9,773)
Grants receivable	-	70,000
Taxes receivable	127,330	90,773
Inventory	427	(2,466)
Prepaid expenses	(1,428)	2
Accounts payable and accruals	23,249	13,985
Government obligations	-	(14,216)
Deferred revenue	(206,366)	(216,807)
Current portion of long term debt	(5,842)	(9,411)
	<u>(87,779)</u>	<u>(77,913)</u>
Cash provided by operations	<u>93,573</u>	<u>122,936</u>
Cash flows from financing activities		
Loan payable - Royal Bank of Canada	(192,673)	(288,374)
Deferred contributions related to property and equipment	157,407	149,312
	<u>(35,266)</u>	<u>(139,062)</u>
Cash flows from investing activities		
Purchase of property and equipment	(139,841)	(41,029)
Increase (decrease) in cash during the year	(81,534)	(57,155)
Cash, beginning of the year	969,011	1,026,166
Cash, end of the year	\$ 887,477	\$ 969,011

The accompanying notes are an integral part of these financial statements

Manuels River Natural Heritage Society Inc.

NOTES TO THE FINANCIAL STATEMENTS

For the year ended October 31, 2015

Pag

1. Purpose of the Organization

The organization was incorporated on January 17, 1992 without share capital under the laws of Newfoundland and Labrador and received its charitable status on February 23, 2002. The organization is exempt from income taxes.

The activities of the Corporation are restricted to those in furtherance of the following objects: To protect, enhance and preserve the entire Manuels River system, through wildlife habitat improvement, construction of an interpretation centre, the presentation of various educational programs and the development of a linear park.

2. Significant Accounting Policies

These financial statements have been prepared in accordance with Canadian accounting standards for not-for-profit organizations. Outlined below are those policies considered particularly significant for the organization.

a. Revenue recognition

The organization follows the deferral method of accounting for contributions. Restricted contributions are recognized as revenue in the year in which expenses are incurred. Unrestricted contributions are recognized as revenue when received or receivable if the amount to be received can be reasonably estimated and collection is reasonably assured.

b. Property and equipment

Property and equipment are recorded at cost. Amortization is recorded on the declining-balance basis at rates which will reduce the original cost to the estimated residual value over the useful life of the assets. In the year of acquisition, amortization is provided for at one-half the following rates.

Buildings	4%
Bridges	4%
Parking lot	8%
Furniture and equipment	20%
Signs	20%
Computers	55%

c. Use of estimates

The preparation of financial statements in conformity with Canadian accounting standards for not-for-profit organizations requires the organization's management to make estimates and assumptions that affect the amounts reported in the financial statements and related notes to the financial statements. Actual results may differ from these estimates, however, such differences would not be expected to have a material impact on these financial statements.

Independent Auditors Report

2. Significant Accounting Policies (continued)

The corporation has evaluated fair values of its financial instruments based on the current interest rate environment, related market values and current pricing of financial instruments with comparable terms. The carrying value of financial instruments is considered to approximate fair value, unless otherwise indicated.

[illegible]

Royal Bank - Primary checking account	\$	4,793	\$	108,316
Royal Bank - Special project savings account		880,929		859,340
Cash floats		1,755		1,355
Total	\$	887,477	\$	969,011

Asset	Cost	Accumulated Amortization	2015		2014	
			Net Book Value	Net Book Value		
Land	\$ 154,822		\$ 154,822	\$ 70,000		
Buildings	5,966,393	358,698	5,607,695	5,727,261		
Bridges	122,806	22,673	100,133	104,305		
Parking lot	37,422	2,909	34,513	35,968		
Computers	15,224	12,134	3,090	6,866		
Furniture and equipment	224,838	80,300	144,538	134,070		
Signs	46,960	12,098	34,862	28,284		
	\$ 6,568,465	\$ 488,812	\$ 6,079,653	\$ 6,106,754		

Independent Auditors Report

Manuels River Natural Heritage Society Inc.

Page 8

NOTES TO THE FINANCIAL STATEMENTS For the year ended October 31, 2015

5. Loan Payable - Royal Bank of Canada

2015 2014

Payable to the Royal Bank of Canada at 2.77% in blended monthly installments of \$2,353 commencing on July 26, 2015 and ending on June 26, 2033.
General security agreement provides first security interest on all present and after-acquired personal property of the borrower.
Guarantee and postponement of claim in the amount of \$900,000 signed by the Town of Conception Bay South.

Balance outstanding October 31.

\$ 395,678 \$ 594,193

Less: current portion

17,497 23,339

Long term

\$ 378,181 \$ 570,854

Principal payments required in each of the next five years are as follows:

2016	\$ 14,497
2017	17,988
2018	18,492
2019	19,011
2020	19,544
Total	\$ 89,532

6. Deferred Contributions Related to Property and Equipment

2015 2014

Deferred contributions related to property and equipment represent government and other assistance received to construct the building and acquire furnishings for the new environmental and education centre located in the Town of Conception Bay South.

Opening balance

\$ 6,011,072 \$ 5,861,760

Additions during the year

320,050 311,583

Less: amounts amortized to revenue

6,331,122 6,173,343

Closing balance

162,643 162,271

\$ 6,168,479 \$ 6,011,072

Independent Auditors Report

Independent Auditors Report

Manuels River Natural Heritage Society Inc.

SCHEDULE OF INCOME

For the year ended October 31, 2015

Page 9

	2015	2014
Grants		
Government of Canada	\$ 9,103	\$ 10,500
Government of Newfoundland & Labrador	19,125	-
Town of Conception Bay South	38,700	40,000
Hibernia Management education grant	210,000	212,000
	<u>276,928</u>	<u>262,500</u>
Amortization of deferred contributions	<u>162,643</u>	<u>162,271</u>
Charitable donations	<u>10,097</u>	<u>2,593</u>
Memberships	<u>5,058</u>	<u>1,996</u>
Other income		
Gala events	-	54,635
Bobber race	22,538	14,029
Giv'er on the river	14,342	12,576
Gift shop sales	45,155	34,198
Facility rentals	119,716	113,305
Bar sales	116,515	54,777
Catering and other sales	22,846	15,538
Admission revenue	36,978	30,909
Summer camp	17,000	17,000
Wage subsidy	48,404	29,555
Interest	8,580	7,389
Miscellaneous	943	16,488
	<u>453,017</u>	<u>400,399</u>
Total	<u>\$ 907,743</u>	<u>\$ 829,759</u>



Manuels River Hibernia Interpretation Centre

7 Conception Bay Highway

Conception Bay South, NL A1W 3A2

(709) 834-2099

info@manuelsriver.com

www.manuelsriver.com